

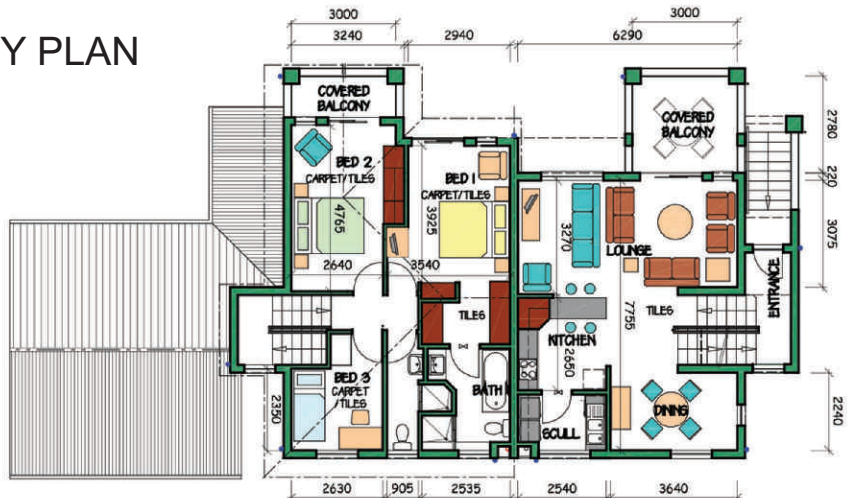
RIVERBEND

ESTATE @ KYALAMI



M

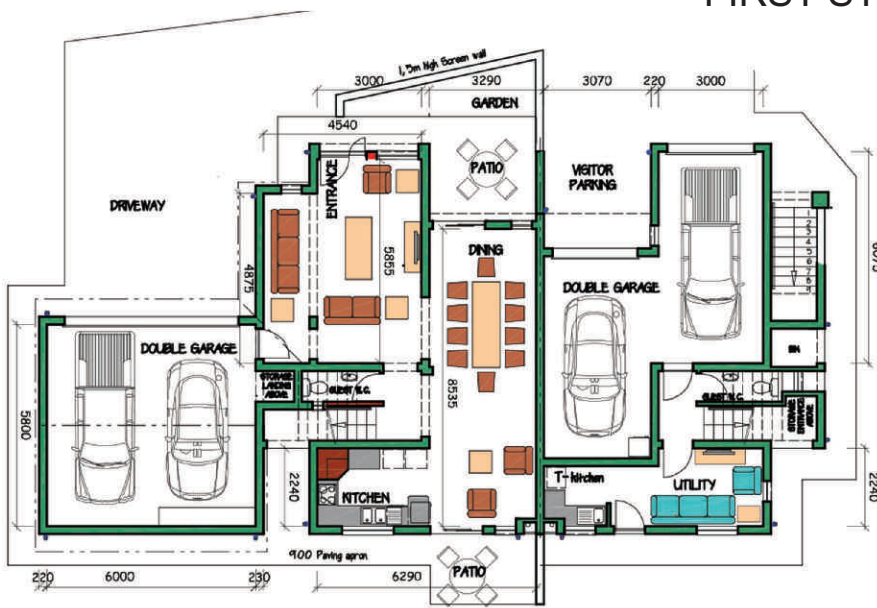
SECOND STOREY PLAN



M

BM

FIRST STOREY PLAN



M

BM

GROUND FLOOR PLAN

PLAN AS ADAPTED FOR UNIT 37

TYPE BM

TOTAL AREAS

GROUND FLOOR = 71.86m²
 FIRST FLOOR = 59.89m²
 COVERED PATIO = 10.32m²
 BALCONY = 4.83m²
HOUSE TOTAL 214.05m²
 (to centre line)

TYPE M

TOTAL AREAS

GROUND FLOOR = 78.36m²
 FIRST FLOOR = 66.68m²
 COVERED BALCONY = 4.88m²
HOUSE TOTAL 149.92m²
 (to centre line)
 GARAGE & STORAGE 40.26m²

DUPLEX TYPE M & BM