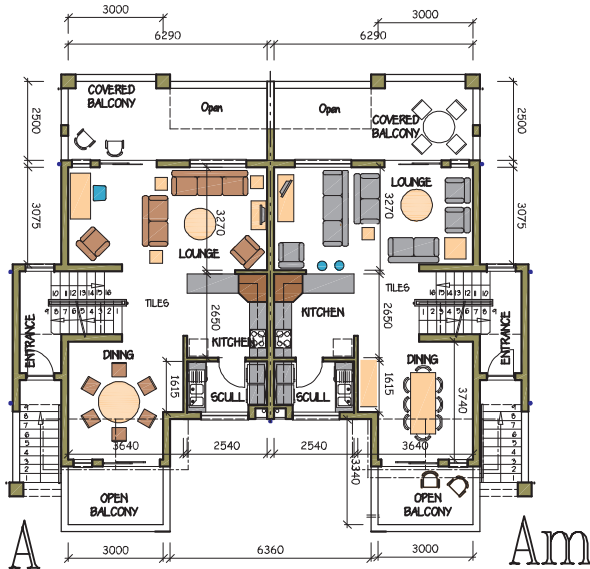
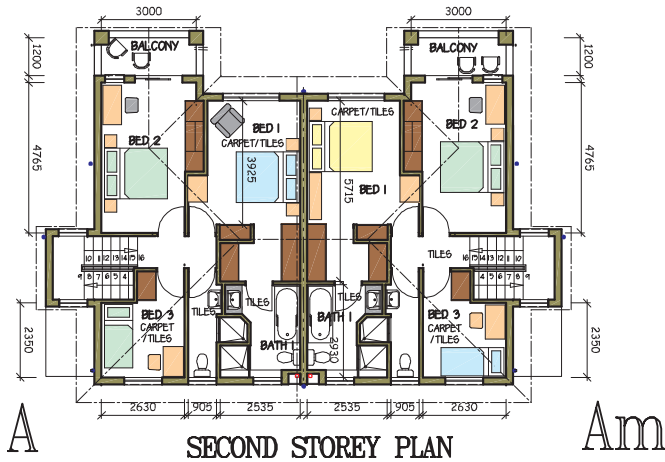
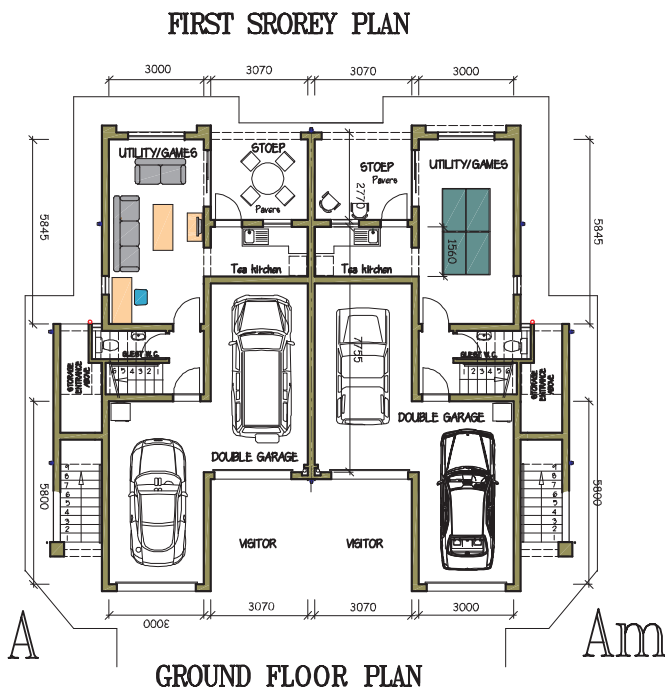


# RIVERBEND

ESTATE @ KYALAMI



|                    |                            |
|--------------------|----------------------------|
| GROUND FLOOR       | 82,50m <sup>2</sup>        |
| STOEP              | 8,81m <sup>2</sup>         |
| FIRST FLOOR        | 63,16m <sup>2</sup>        |
| COVERED STOEP      | 14,08m <sup>2</sup>        |
| SECOND FLOOR       | 66,61m <sup>2</sup>        |
| COVERED STOEP      | 4,83m <sup>2</sup>         |
| <b>HOUSE TOTAL</b> | <b>239,99m<sup>2</sup></b> |
| (to centreline)    |                            |
| OPEN BALCONIES     |                            |
| let FLOOR - NORTH  | 4,74m <sup>2</sup>         |
| let FLOOR - SOUTH  | 7,08m <sup>2</sup>         |



## DUPLEX TYPE A & AM